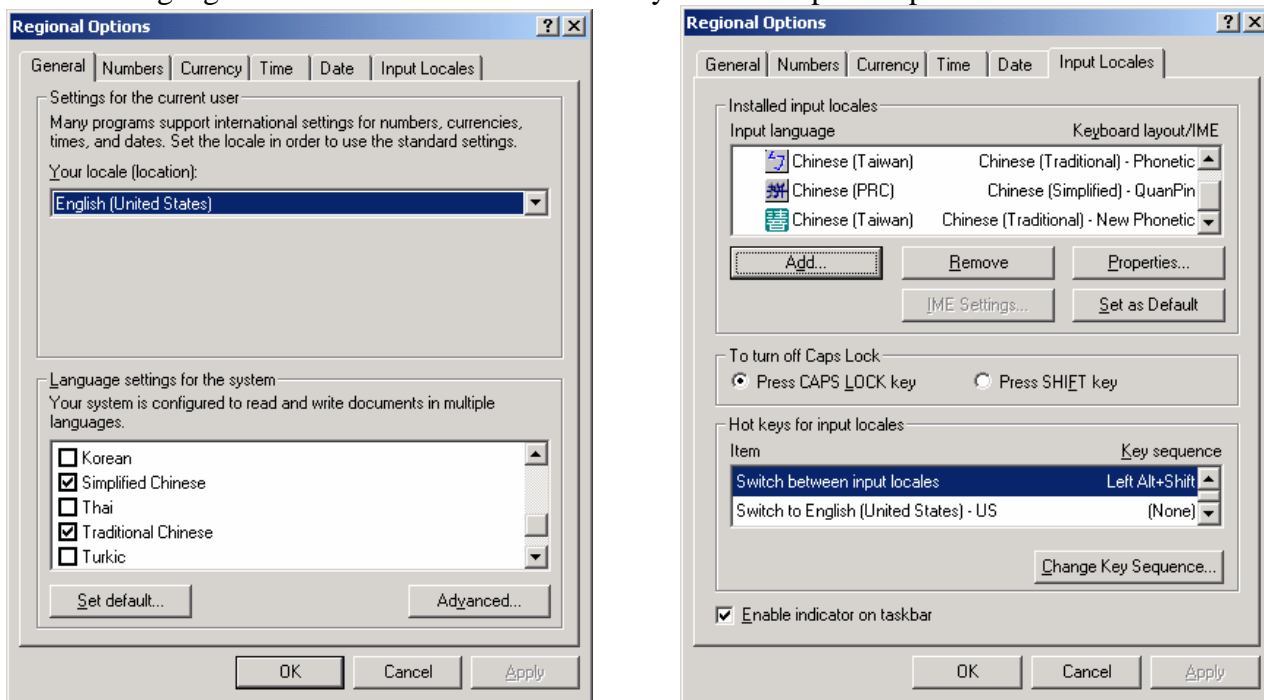


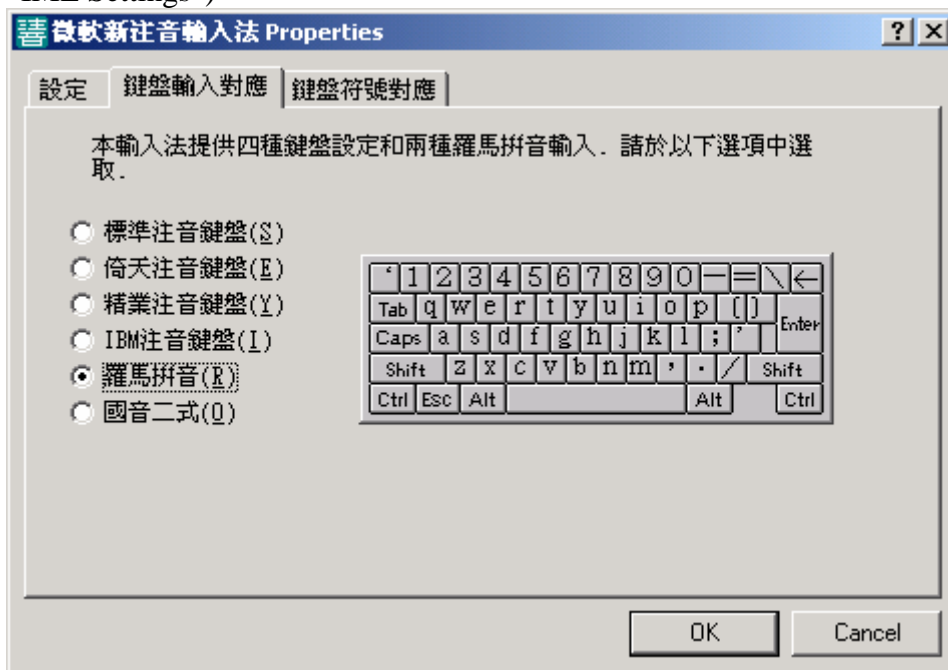
Microsoft Windows 2000/XP multilingual feature

Windows 2000 Chinese setups: (The setup of Windows XP is very similar to and you will see the screens later)
From Control Panel select Regional Options and you will see the following window. You need to install Chinese languages and reboot the machine before you can setup the Input Locales.

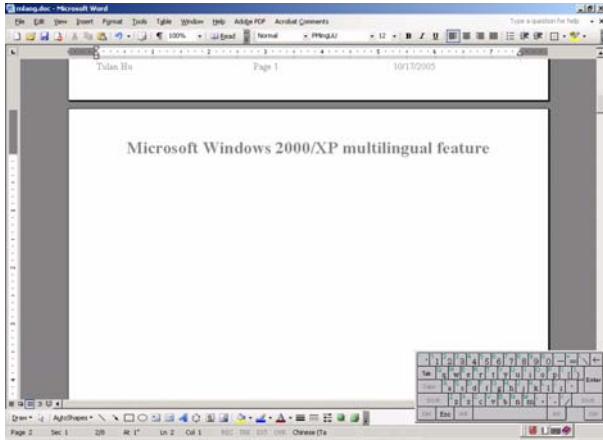


Input Locales allow you to setup different keyboard layouts.

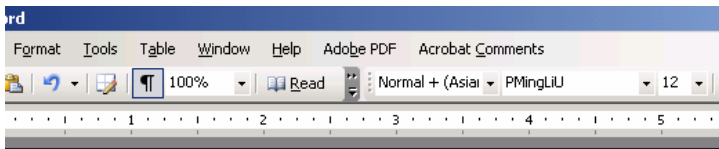
The “New Phonetic allows you to use Roma’s Pin Yin which is the same as Han Yu Pin Yin. You will get the traditional Chinese characters. (The following window will appear if you select “New Phonetic” and click “IME Settings”)



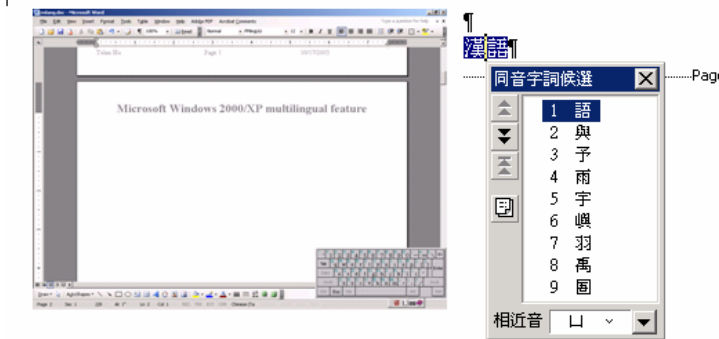
Microsoft Windows 2000/XP multilingual feature



After the setup and select Chinese (Taiwan) from the language bar, you will see a different icon shows up. You may select to show or not show your soft keyboard. Usually we use “half”半形 shape instead of “full” shape 全形. The difference is the width of a character.



Microsoft Windows 2000/XP multilingual

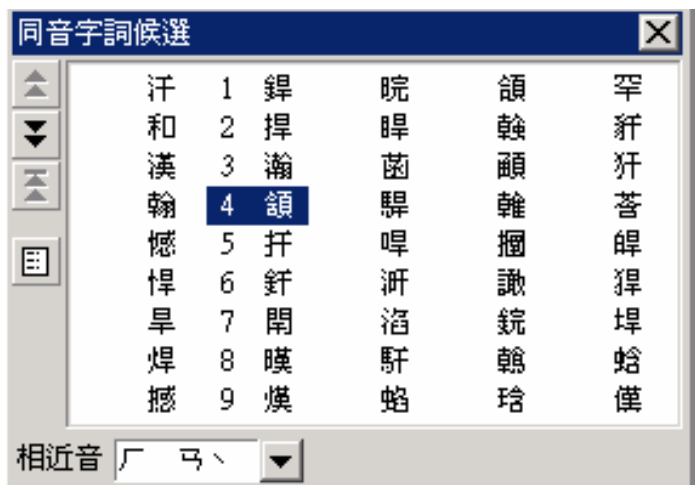


You may type ‘han4’. It will show up a possible character and then you may press the down arrow key to list a set of characters that have the same sound for you to select.

Use the number to select the desired character and press the enter/return key to set the character.

Click the double arrow on the left hand side to list more choices.

Use the right arrow key to present multiple columns of words. Mouse and arrow keys allow you to select the desired word.



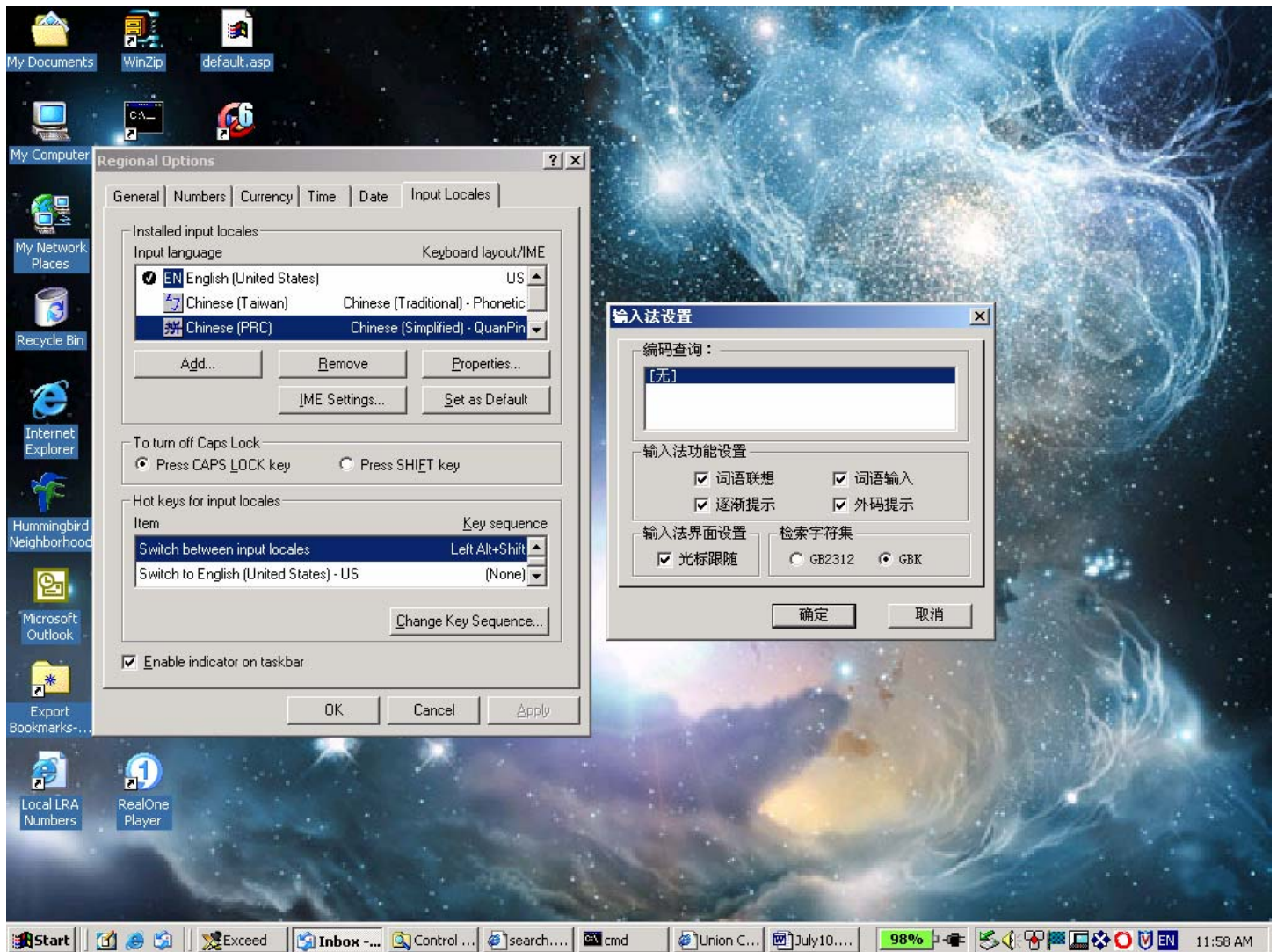
This allows you to use tone to narrow down the character selection. But the QuanPin cannot enter tone selection.

Press **ctrl+alt+,** 3 keys to show the symbol keyboard.



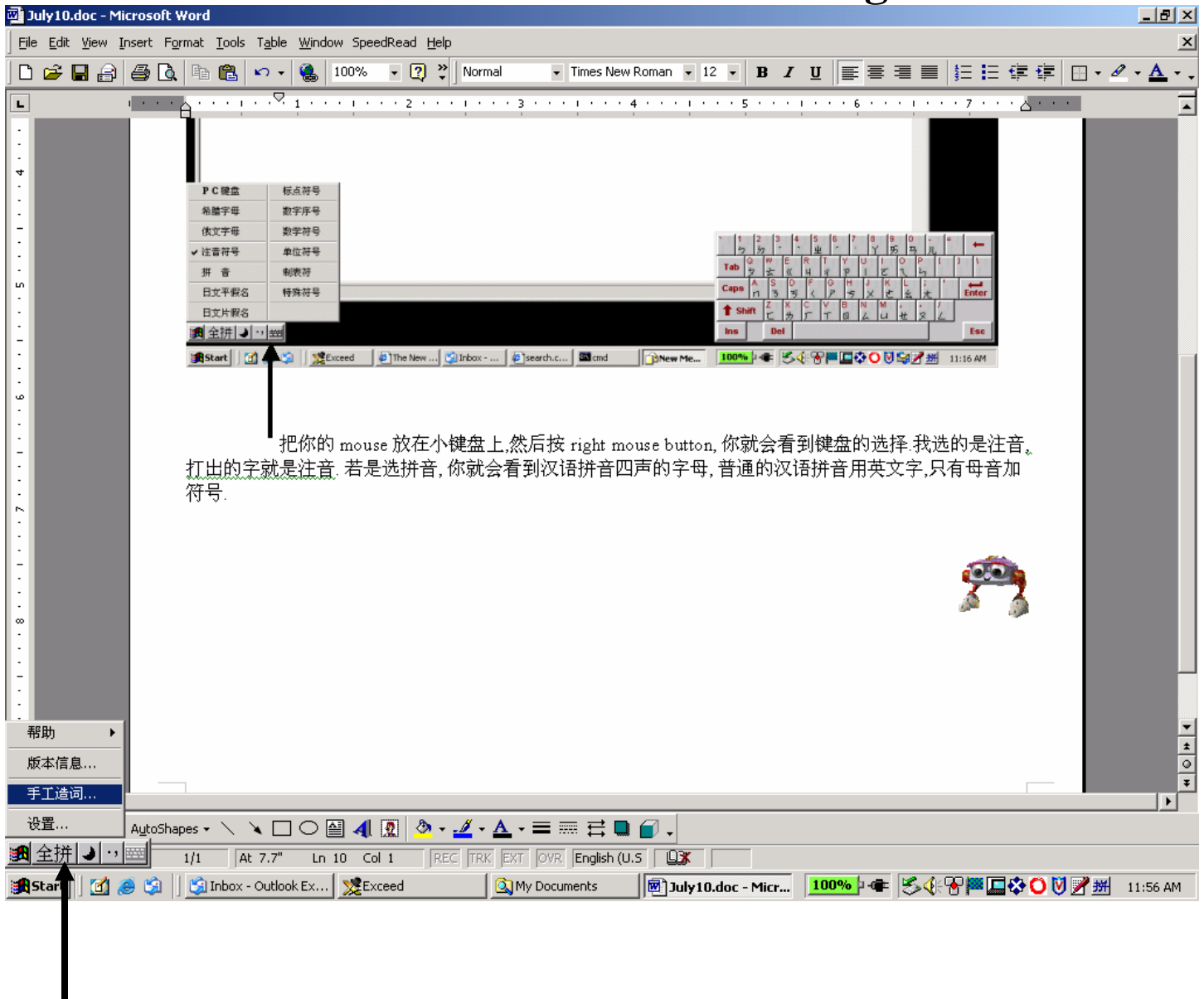
Microsoft Windows 2000/XP multilingual feature

Here is an example of IME Settings for the QuanPin. The GBK code is selected instead of GB2312.



You will see “EN” at your system tray after you add different keyboard layouts.
There is no reboot needed for adding keyboard layouts.

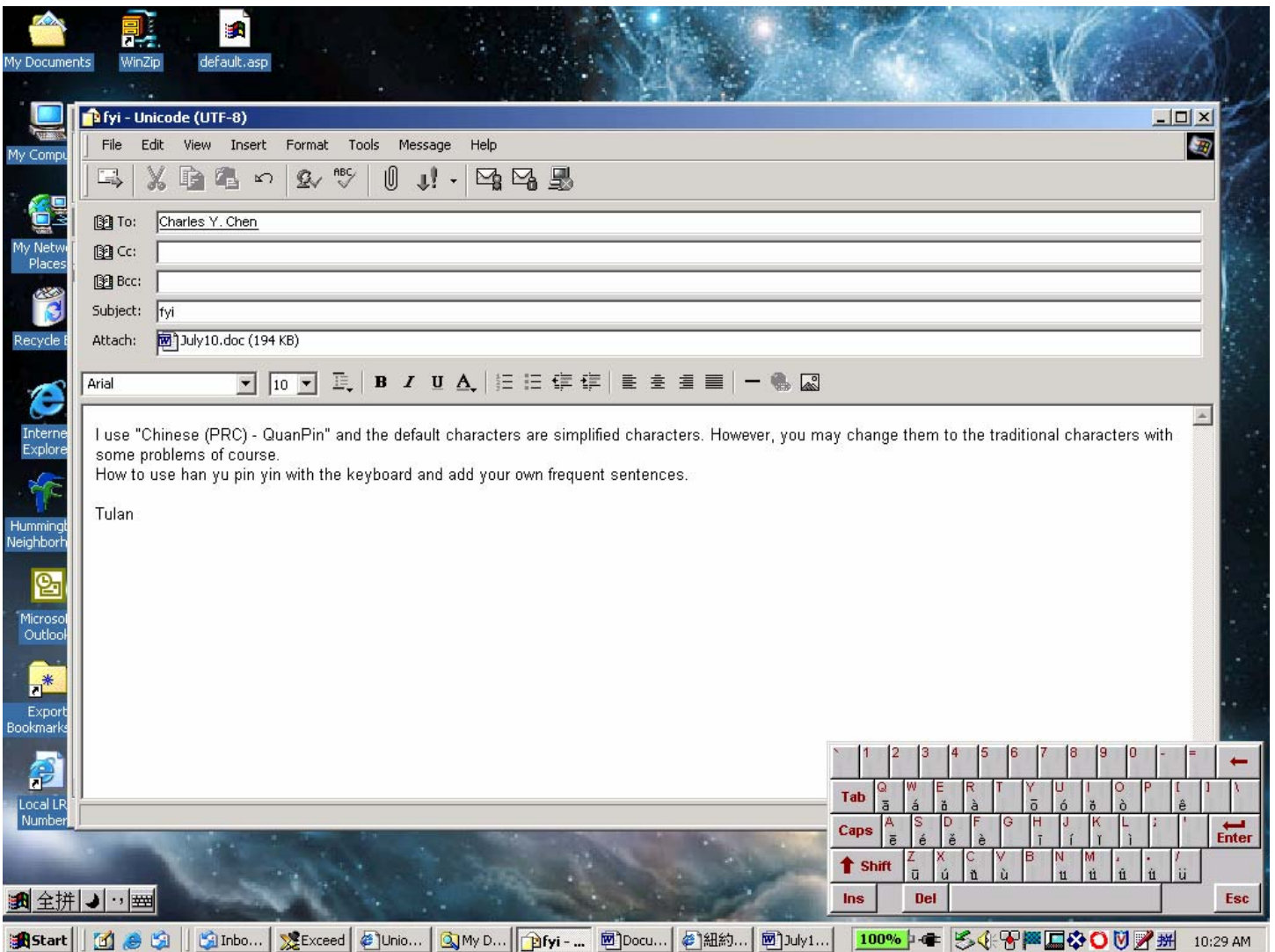
Microsoft Windows 2000/XP multilingual feature



把你的 mouse 放在小键盘上,然后按 right mouse button, 你就会看到键盘的选择. 我选的是注音. 打出的字就是注音. 若是选拼音, 你就会看到汉语拼音四声的字母, 普通的汉语拼音用英文字母, 只有母音加符号.

把 mouse 放在”全拼”上, 然后按 right mouse button, 你就会看到手工造词. 选此看到小窗口, 供你打入要的词组及简化的外码. 然後按添加就可 Save. 下次只须打外码, 你要的词组就会显出. 在视窗选”维护”则可改变原来的词组或是外码.

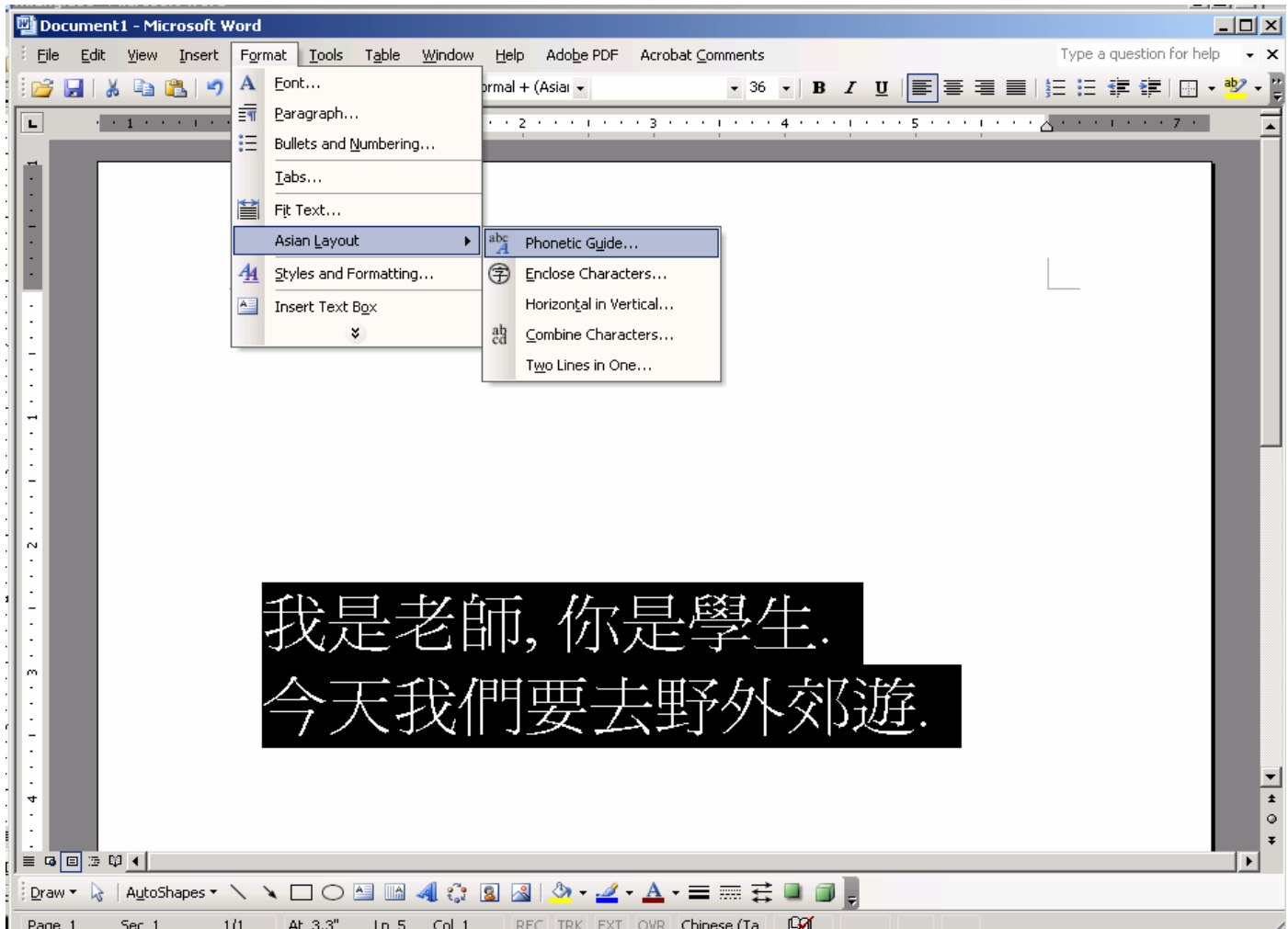
Microsoft Windows 2000/XP multilingual feature



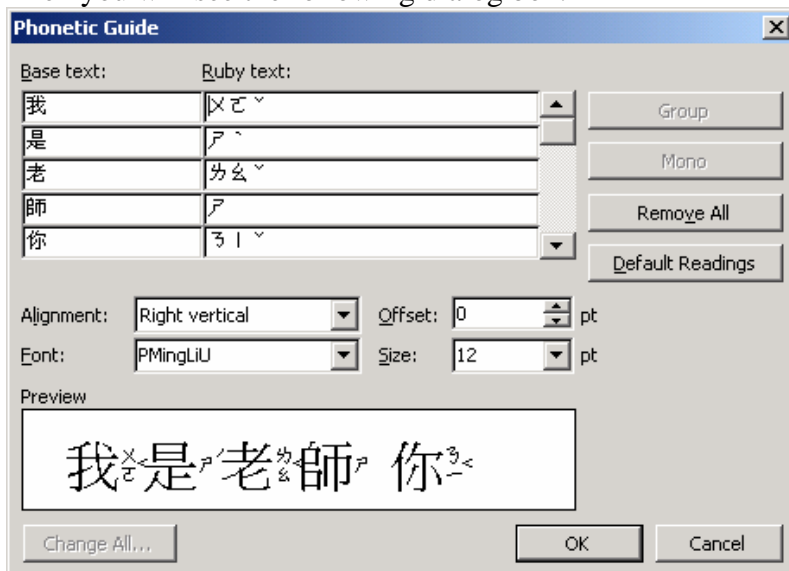
āáǎàōóǒòēéěèī í ǐ ì ūúǔù

Microsoft Windows 2000/XP multilingual feature

If you have MS Office 2003, then you can try the following feature. Type some characters and highlight the characters, then select Format->Asian Layout->Phonetic Guide.



Then you will see the following dialog box.



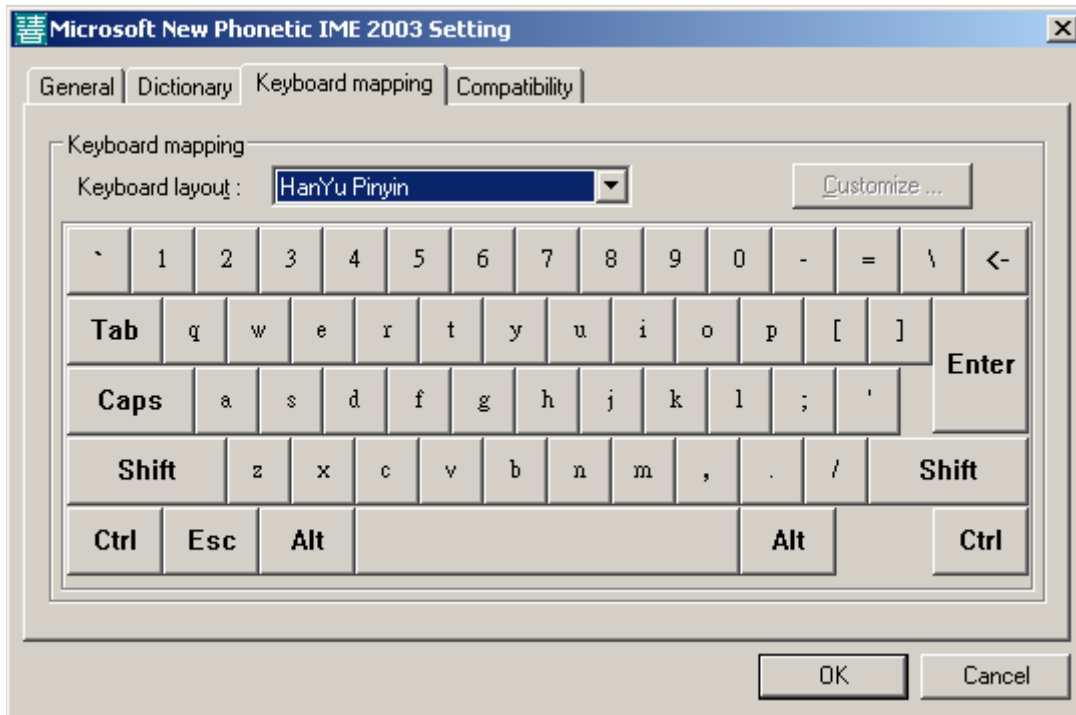
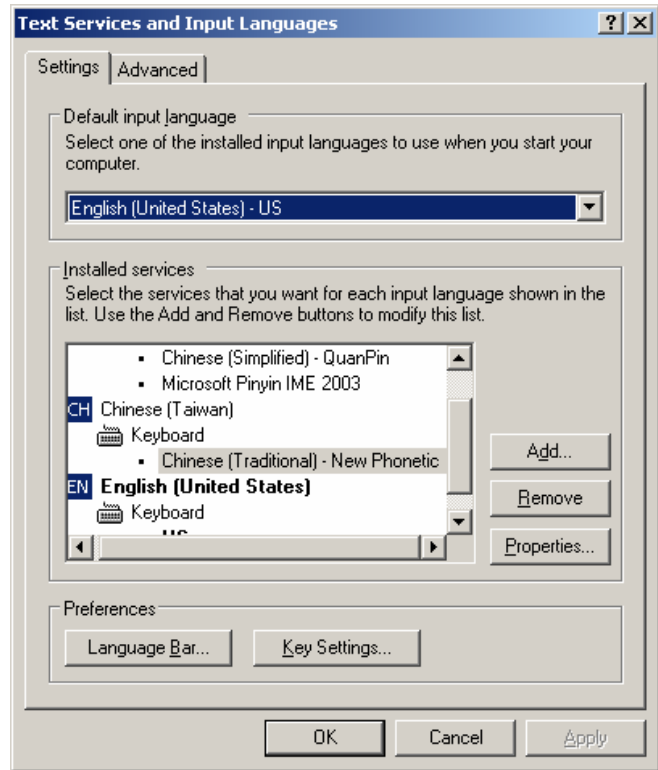
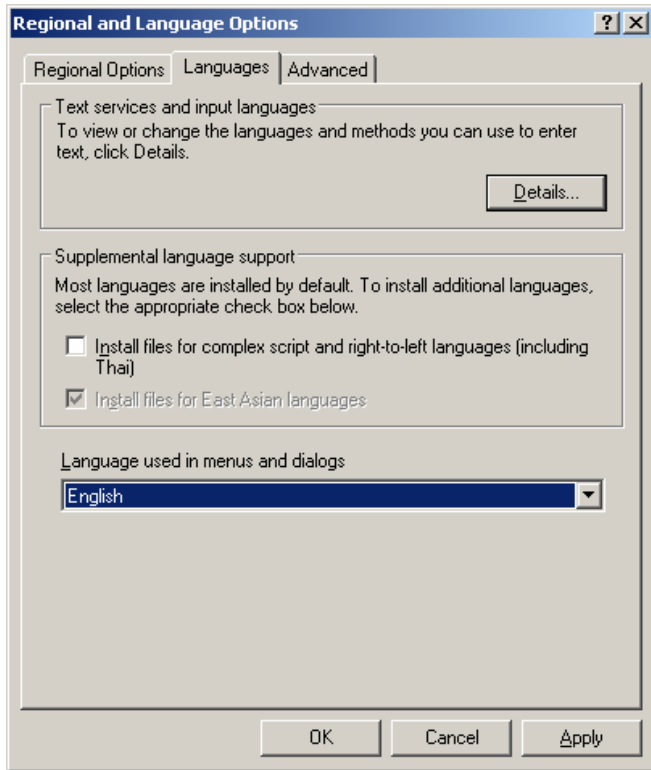
After you click the ok button here, your characters will have the phonetic at the right hand side. The "Alignment" determines the location of the phonetic and the "size" indicates how big you want the phonetic.

但是四聲,不大對.還是用有注音的字型比較好.

The following is an example to use a font that with phonetics.

Microsoft Windows 2000/XP multilingual feature

The following is Windows XP dialog for Control->Regional and Language Options: You need to click the Details button to see the Keyboard layout



You may setup your favor input method after you click the properties button.

Microsoft Windows 2000/XP multilingual feature

選擇不同的字型，注音就會不一樣

參見下面的例子，空格是沒有多破音字了。

HanWangKai Midium ChuYin	HanWangKai Midium Poin1	HanWangKai Midium Poin2	HanWangKai Midium Poin3
還	還	還	
行	行	行	行
伯	伯	伯	
好	好		
和	和	和	和
弟	弟	弟	
要	要		
了	了		
胖	胖		