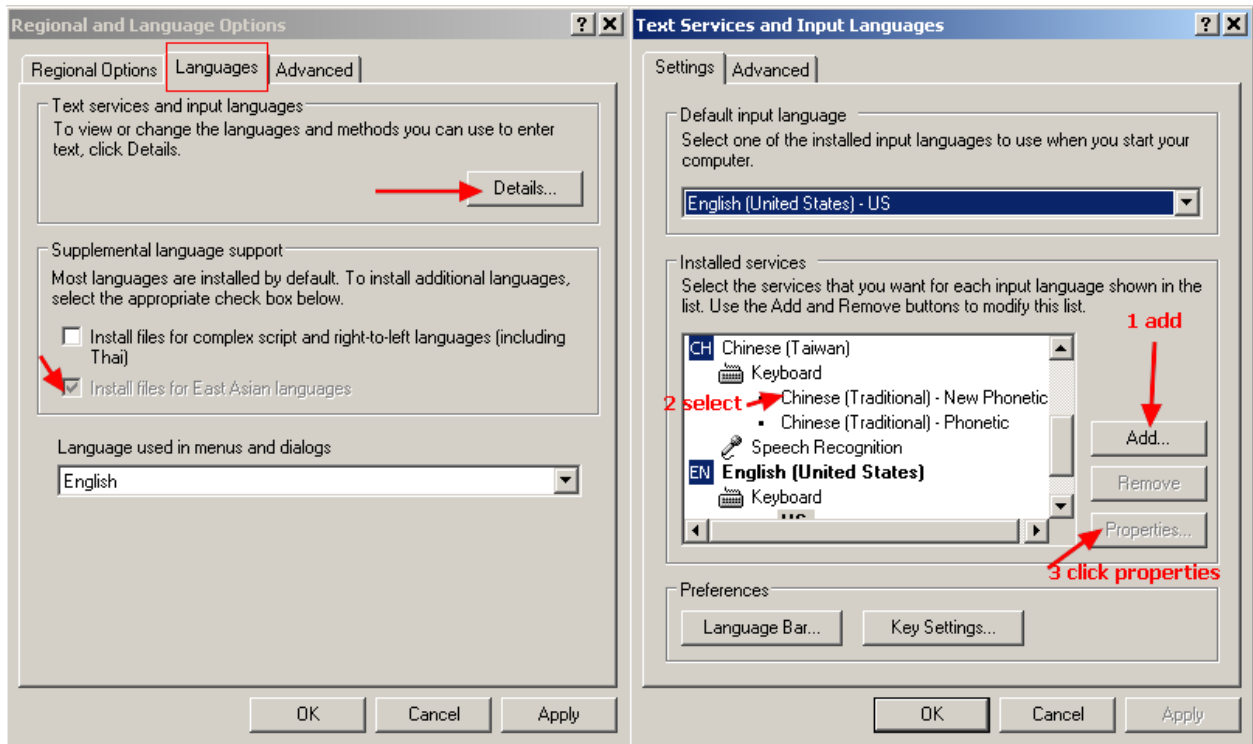


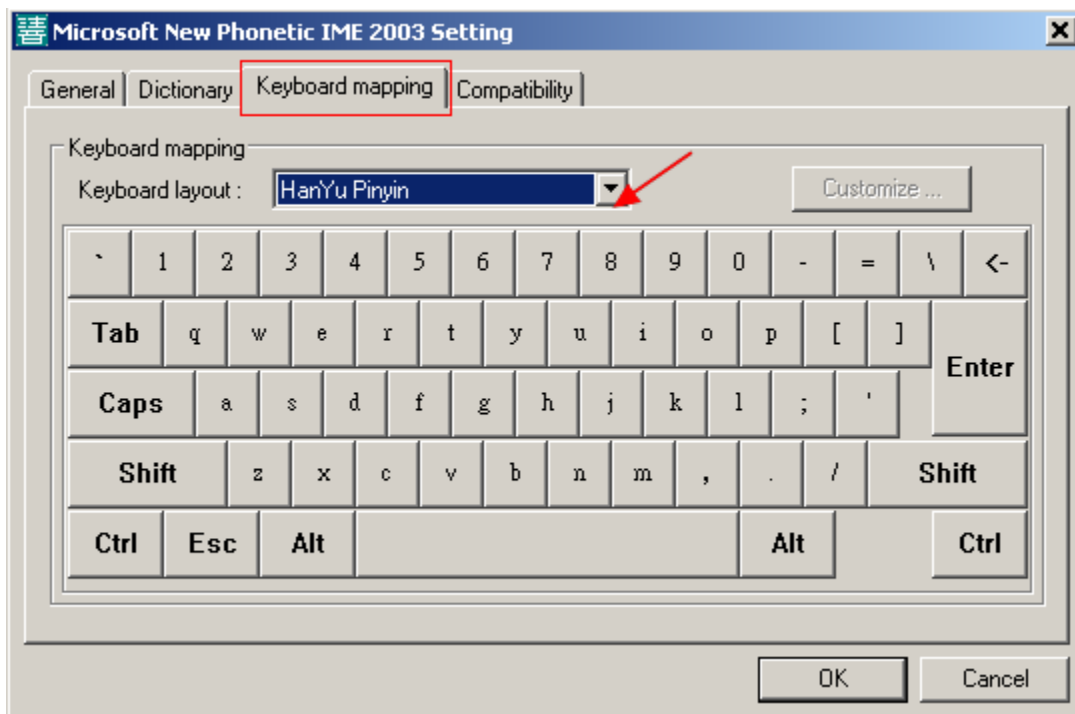
Chinese Input Method

Chinese input method settings: <http://westfieldnj.com/ucs/pc.php>

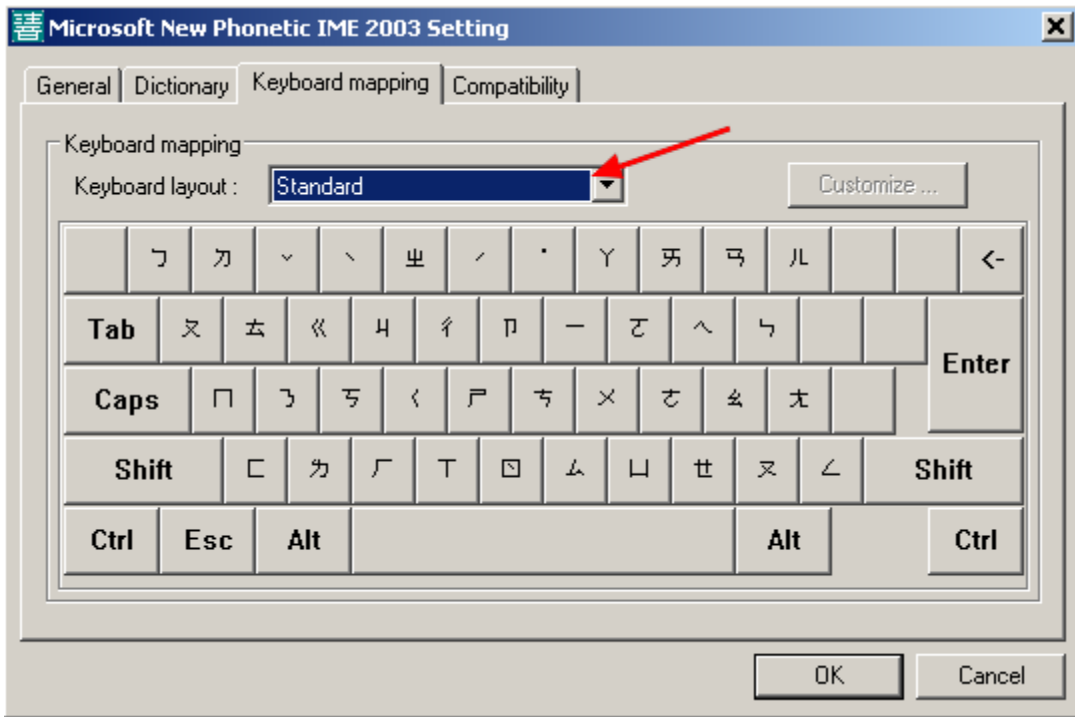
Control Panel -> Regional and Language



Select a keyboard layout and click the properties



Chinese Input Method

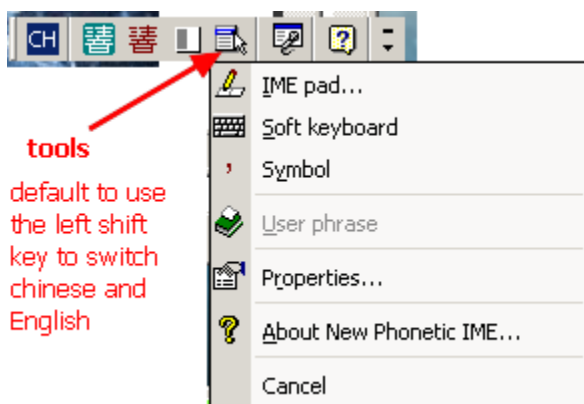


You should see the EN icon after the settings



click to show available keyboards

Select your Chinese keyboard



tools
default to use the left shift key to switch chinese and English

The tools menu

Chinese Input Method

Show different soft keyboards



show Hanyu pinyin keyboard that is the same as English keyboard



Chinese Input Method

When you want to type Chinese in Hanyu Pinyin or Zhuyin

1. Switch your keyboard to Chinese
2. Type Hanyu Pinyin, it will show you either the default character or a list of same sound characters.

For example, you type “jia”, it will show you all of the characters of the same sound for you to select. If your character is no on this list, you can click the next page or use your down arrow key or Page Down key (depending upon your computer) to show the next list if any. Then enter the number by the character or chick the desired character. You may need to press the enter key again to make sure the character is put on your page.



3. If you want to type English in between of Chinese characters, then you can simply press the left Shift key. The left shift key is the default toggle key to switch Chinese and English characters.
4. Press **【control alt ,】** three keys together to show the symbol keyboard.

The page <http://chinesedigger.blogspot.com/2008/05/chinese-input.html> is discussing Chinese Input Method in Chinese. Select the left side tool for its English translation.